

M

KOGELBERG



ABOUT

The dream starts here! Purchase one of 107 upmarket duplexes in this prestigious and secure estate. Kogelberg Estate boasts the perfect marriage between tranquillity and convenience, being set in a beautiful and peaceful location in Kuils River yet close to a plethora of necessary amenities and with easy access to the R300 and N1.

This is the ultimate lifestyle opportunity whether you're a career-driven professional or yearning for a quiet life, not to mention the undeniably beautiful design of these modern and luxurious units.

Kogelberg consists out of 2 types of units – 72sqm - 2 Bedroom duplex units
and 102sqm - 3 Bedroom duplex units. (These are sold out)

What more do you want for an investment?



benefits

- ▶ Townhouses from R 1 395 000
- ▶ Up to 100% bonds available
- ▶ R 10 000 deposit
- ▶ No Transfer Duties
- ▶ Estimated Rental Income from R8 500
- ▶ 24 Hour Security Complex
- ▶ High Capital Growth
- ▶ Levies ± R1 250
- ▶ Rates ± R655



PAPEGAAIBERG

KOGELBERG

SIMONSBERG

LIMIETBERG

TOWERKOP

HAWEQUA

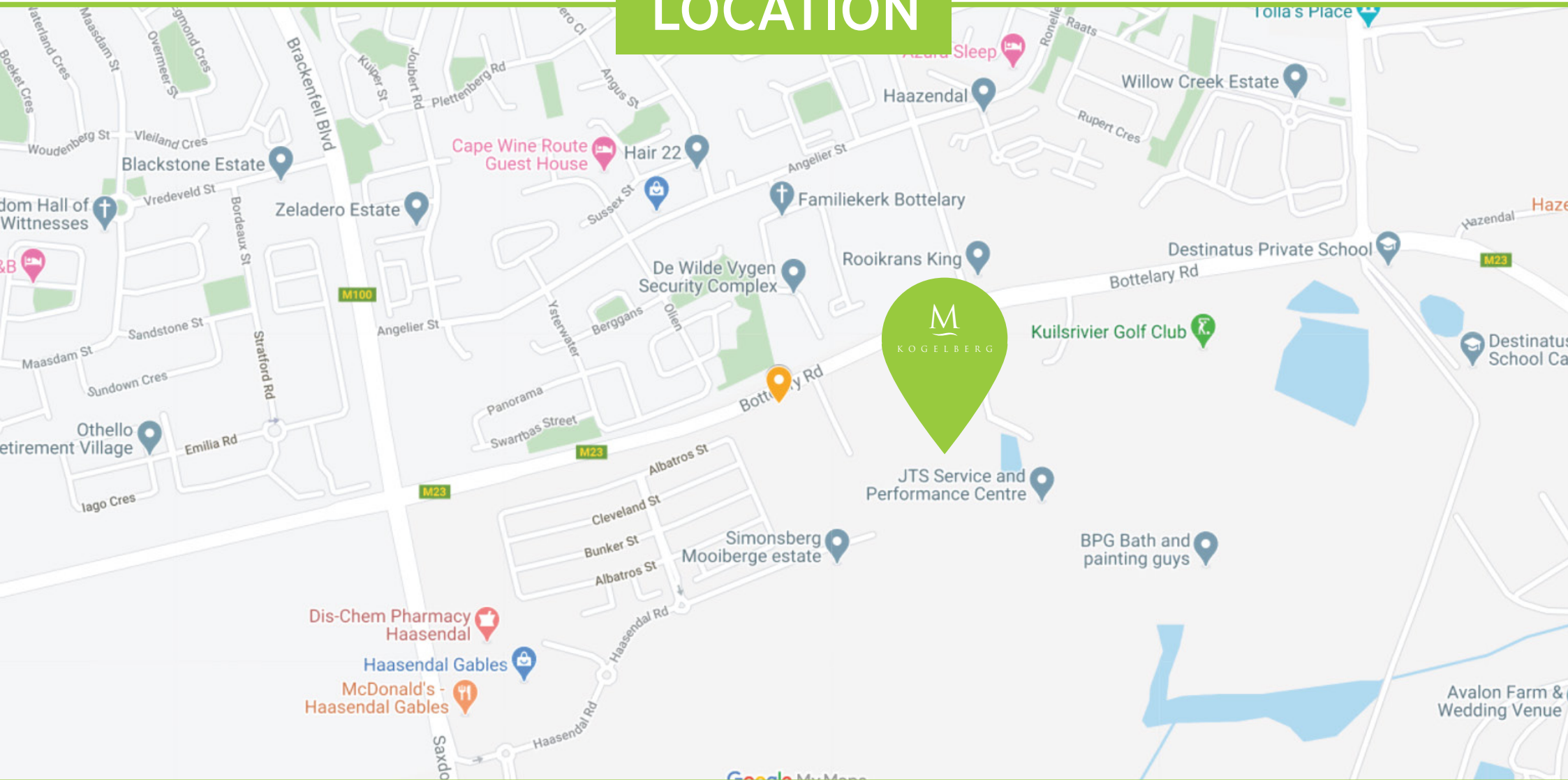
CEDERBERG

battelary road

Aerial View



LOCATION



▶ MEDICAL

- Netcare Kuilsriver Hospital
3.9km
- Dis-Chem Pharmacy Haasendal
1.8km

▶ TRAVEL

- Stellenbosch
20km
- Cape Town
32.7km

▶ RECREATION

- Haasendal Mall
1.8km
- Kuils River Golf Club
650m

▶ EDUCATION

- Destinatus Private School
950m
- Bottelary Primary School
5km



80%
SOLD

SITE DEVELOPMENT PLAN



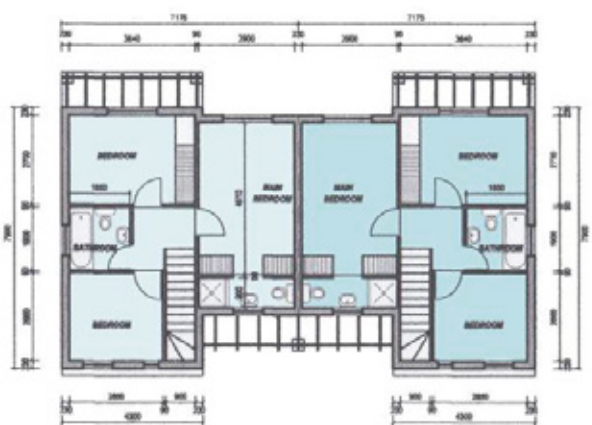
SOLD OUT

UNIT G

- ▶ 102m²
- ▶ Three Bedrooms
- ▶ One Bathroom
- ▶ Garage



ground floor

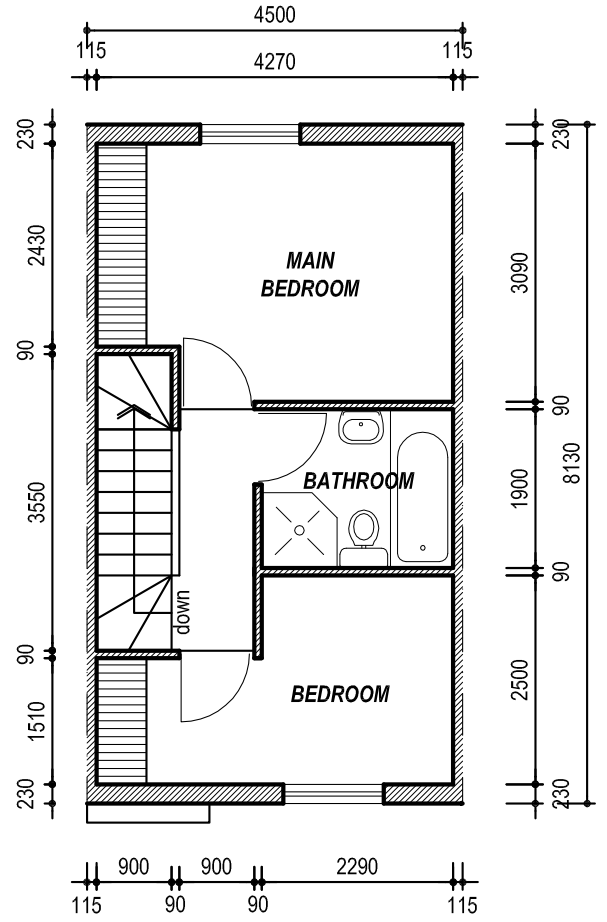
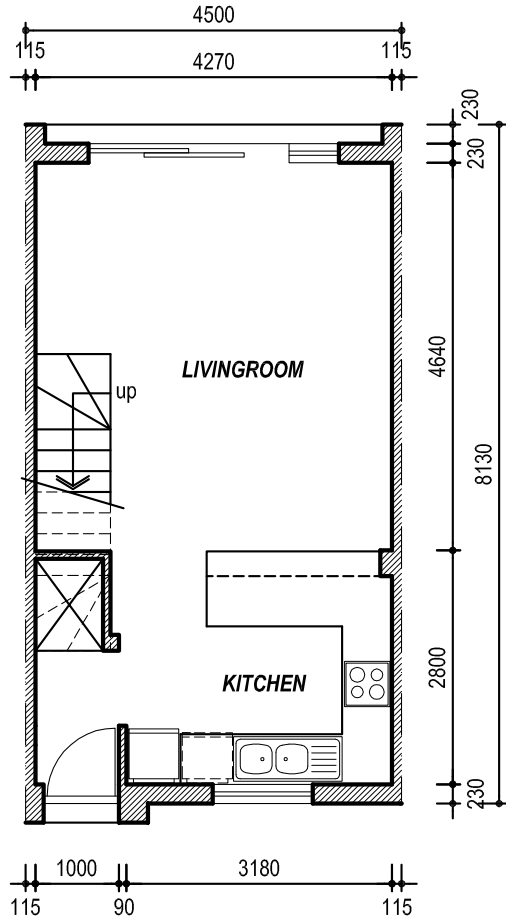


first floor

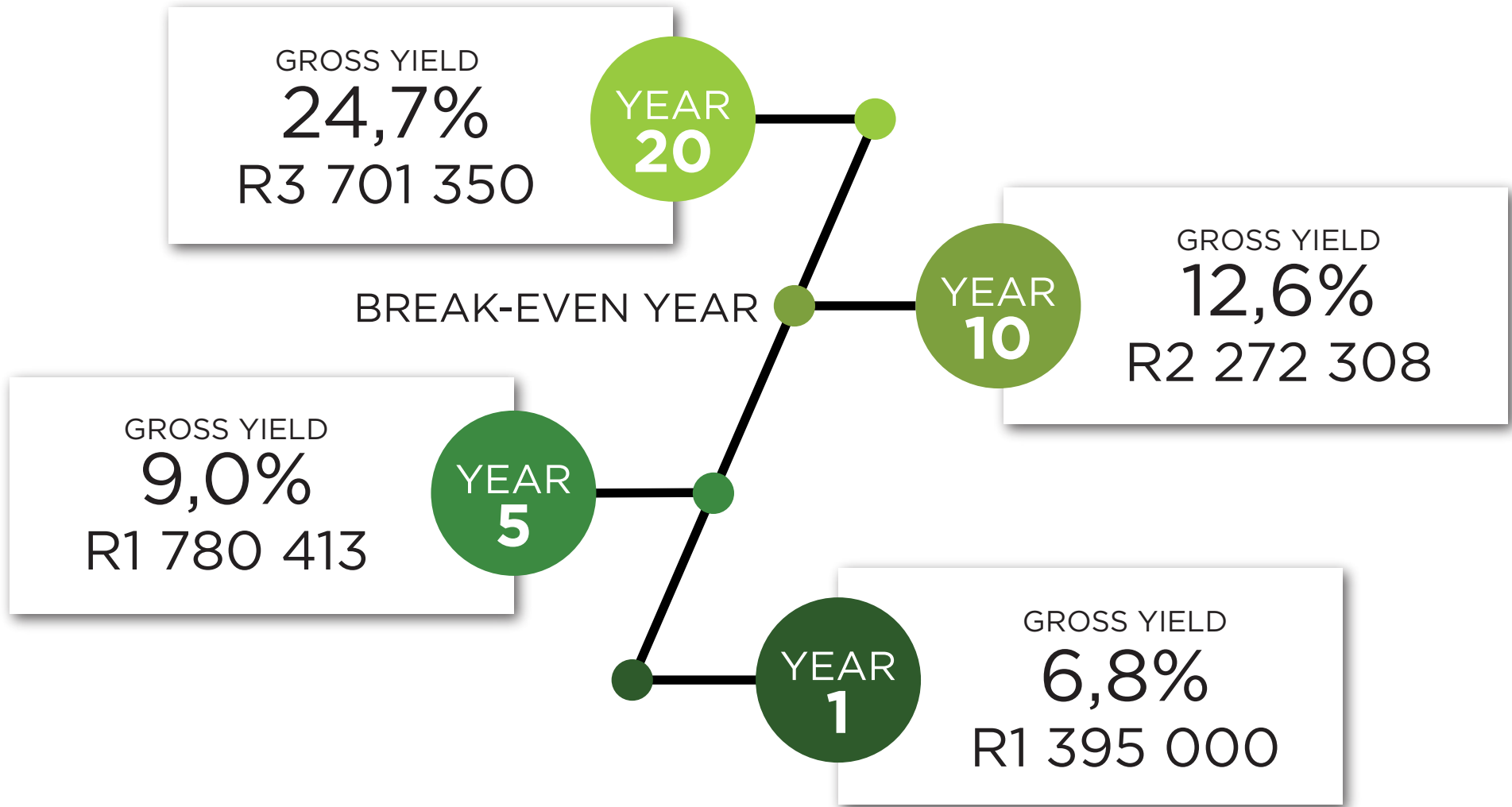


UNIT F

- ▶ 72m²
- ▶ Two Bedrooms
- ▶ One Bathroom



INVESTMENT SUMMARY



M

KOGELBERG



www.kogelberg.harcourts.co.za

Harcourts
Dunn

MICHAEL 082 823 5971 michael.heath@harcourts.co.za

cl. COMBINED
DEVELOPERS